

- *Double Fan*

Single Inlet/Double Fan-Industrial Class Evaporative Cooling Equipment with capacities of 52,000 CFM and up to 1.5" ESP as standard or higher

Why?

Cel-Air® units are high capacity, high efficiency evaporative cooling equipment. With over 120 cataloged units and sizes ranging from 6,000 CFM to over 100,000 CFM, United Metal Products gives the engineer, contractor, or owner the choice and options they want.

Benefits:

- 120 cataloged sizes
- 2" double wall or single wall construction
- Galvanized, aluminum, stainless steel
- 6,000–100,000 CFM and above
- Evaporative cooling
- Forward curve, airfoil, or backward inclined wheels
- ETL labeling available
- Powder coated
- ABS reservoir available

Applications:

- Aircraft hangars
- Clean room M.U.A.
- Food processing plants
- Gymnasiums
- Hospitals
- Kitchens
- Make up air requirement
- Manufacturing facilities
- Military bases
- Mining industry
- Municipalities
- Prisons
- Process cooling
- Schools
- Textile industries
- Turbine inlet cooling
- Waste water treatment facility
- Warehouses

Resources Available for This Product

- Catalog By Mail
- Catalog Online

United Metal Products

1920 E Encanto Drive Tempe, AZ 85281
T 480.968.9550
F 480.968.9555
www.unitedmetal.com



MODEL (note discharge prefix) E=End D=Down U=Up Discharge	VOLUME CFM	External Static Pressure ("WG) (Not including Filter Pd*)												FAN Model / Size	MOTOR (460v/3ph/60Hz)				EVAPORATIVE MEDIA	
		0.25 2xHP RPM		0.50 2xHP RPM		0.75 2xHP RPM		1.00 2xHP RPM		1.25 2xHP RPM		1.50 2xHP RPM			Efficiency	Amps FLA SA		NEMA	Area Ft2	Velocity FPM
E/D/U2x365200	52,000	7.5	256	10	283	10	309	15	333	15	358	15	382	DWDI FC / 36 DWDI FC / 36 DWDI FC / 36	88.5%	11.1	59.5	254T	103	500
															90.2%	14.3	87.0	256T	103	500
															90.2%	22.0	130.2	284T	103	500
E/D/U2x366175	61,750	10	276	15	301	15	325	15	347	20	368	20	389	DWDI FC / 36 DWDI FC / 36 DWDI FC / 36	90.2%	14.3	87.0	256T	122	500
															90.2%	22.0	130.2	284T	122	500
															91.7%	25.0	175.0	256T	122	500
E/D/U2x367150	71,500	15	297	20	322	20	344	20	364	25	384	25	402	DWDI FC / 36 DWDI FC / 36 DWDI FC / 36	90.2%	22.0	130.2	284T	142	500
															91.0%	25.1	157.0	286T	142	500
															91.7%	29.5	189.0	284T	142	500
E/D/U2x367800	78,000	20	312	20	335	25	357	25	377	25	396	30	414	DWDI FC / 36 DWDI FC / 36 DWDI FC / 36	91.0%	25.1	157.0	286T	154	500
															91.7%	29.5	189.0	284T	154	500
															92.4%	35.5	230.0	286T	154	500
E/D/U2x368450	84,500	25	326	25	350	30	371	30	390	30	408	40	426	DWDI FC / 36 DWDI FC / 36 DWDI FC / 36	91.7%	32.0	212.0	324T	167	500
															92.4%	35.5	230.0	286T	167	500
															93.0%	47.8	315.0	324T	167	500
E/D/U2x449100	91,000	15	561	15	581	20	600	20	619	20	637	25	656	DWDI AF / 44 DWDI AF / 44 DWDI AF / 44	91.0%	20.3	150.5	254T	180	500
															91.7%	25.0	175.0	256T	180	500
															91.7%	29.5	189.0	284T	180	500
E/D/U2x4410075	100,750	15	610	20	628	20	646	25	663	25	680	25	697	DWDI AF / 44 DWDI AF / 44 DWDI AF / 44	91.0%	20.3	150.5	254T	200	500
															91.7%	25.0	175.0	256T	200	500
															91.7%	29.5	189.0	284T	200	500

Please specify the fan discharge location when ordering these units:

E=End Discharge
D=Down Discharge
U=Up Discharge

Standard Evaporative Cooler Pump Data				
Model	Volts	HP	Amp	GPH @ 10'
B	115	3/10	5	2,560
C	115	1/2	7.3	3,120

Alternative Evaporative Cooler Pump Data				
Model	Volts	HP	Amp	GPH @ 10'
B	230	3/10	5	1,750



MODEL E=End D=Down U=Up Discharge	PUMPS		FILTER *		SINGLE INLET / DOUBLE FAN EVAPORATIVE COOLER DIMENSIONS - See Drawing On Page 2										WEIGHTS	
	Model	Qty	Area Ft2	Velocity FPM	WIDTH "	HEIGHT "	LENGTH "	A "	B "	C "	D "	E1 "	E2 "	F "	Ship lb	Operate lb
E/D/U2x365200	B	2	112	465	204	99	128	6.00	22.81	42.75	42.94	36.00	46.5	30.81	5,900	7,700
	B	2	112	465	204	99	128	6.00	22.81	42.75	42.94	36.00	46.5	30.81	6,000	7,800
	B	2	112	465	204	99	128	6.00	22.81	42.75	42.94	36.00	46.5	30.81	6,100	7,900
E/D/U2x366175	B	2	130	475	240	99	128	6.00	22.81	42.75	42.94	36.00	82.5	30.81	6,500	8,600
	B	2	130	475	240	99	128	6.00	22.81	42.75	42.94	36.00	82.5	30.81	6,700	8,800
	B	2	130	475	240	99	128	6.00	22.81	42.75	42.94	36.00	82.5	30.81	6,700	8,800
E/D/U2x367150	B	2	154	464	276	99	128	6.00	22.81	42.75	42.94	48.00	94.5	30.81	7,400	9,800
	B	2	154	464	276	99	128	6.00	22.81	42.75	42.94	48.00	94.5	30.81	7,500	9,900
	B	2	154	464	276	99	128	6.00	22.81	42.75	42.94	48.00	94.5	30.81	7,800	10,200
E/D/U2x367800	B	2	168	464	300	99	128	6.00	22.81	42.75	42.94	48.00	118.5	30.81	7,800	10,500
	B	2	168	464	300	99	128	6.00	22.81	42.75	42.94	48.00	118.5	30.81	8,200	10,900
	B	2	168	464	300	99	128	6.00	22.81	42.75	42.94	48.00	118.5	30.81	8,400	11,100
E/D/U2x368450	C	2	182	464	324	101	128	6.00	22.81	42.75	42.94	48.00	142.5	32.81	8,800	11,700
	C	2	182	464	324	101	128	6.00	22.81	42.75	42.94	48.00	142.5	32.81	8,900	11,800
	C	2	182	464	324	101	128	6.00	22.81	42.75	42.94	48.00	142.5	32.81	9,100	12,000
E/D/U2x449100	C	2	196	464	348	107	140	6.00	41.25	60.00	49.63	60.00	108.0	52.00	12,500	15,600
	C	2	196	464	348	107	140	6.00	41.25	60.00	49.63	60.00	108.0	52.00	12,500	15,600
	C	2	196	464	348	107	140	6.00	41.25	60.00	49.63	60.00	108.0	52.00	12,900	16,000
E/D/U2x4410075	C	2	216	466	384	107	140	6.00	41.25	60.00	49.63	60.00	144.0	52.00	13,100	16,600
	C	2	216	466	384	107	140	6.00	41.25	60.00	49.63	60.00	144.0	52.00	13,100	16,600
	C	2	216	466	384	107	140	6.00	41.25	60.00	49.63	60.00	144.0	52.00	13,500	17,000

Data is based on the maximum output of each unit size. Intermediate volumes will be achieved by reducing the fan speed.

* The filter is an option. When adding filters, add the filter pressure drop to the unit ESP and use that total to select the motor HP.

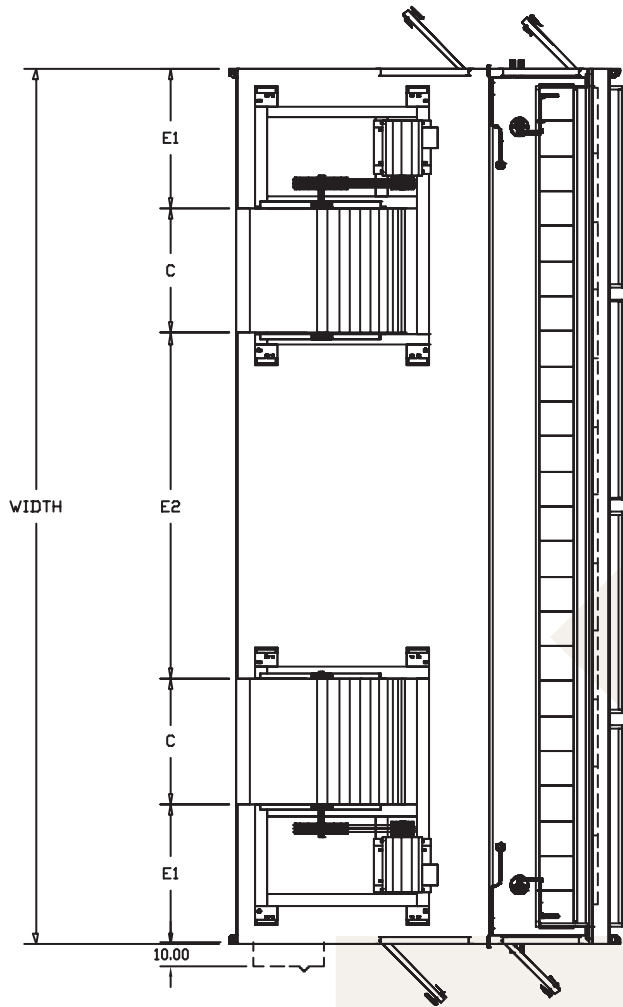
All these units can operate at higher static pressures with fan or motor changes. Please contact the factory with your requirements.

Data shown is based at sea level. HP and performance may be effected at high altitudes.

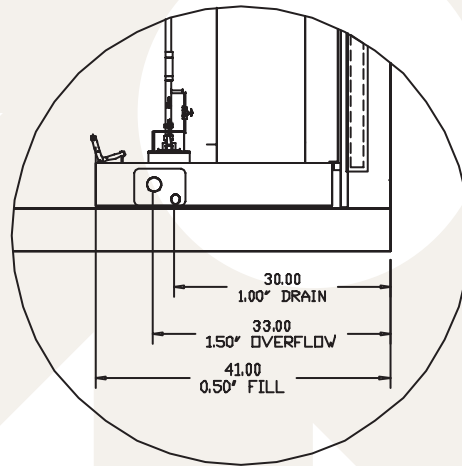
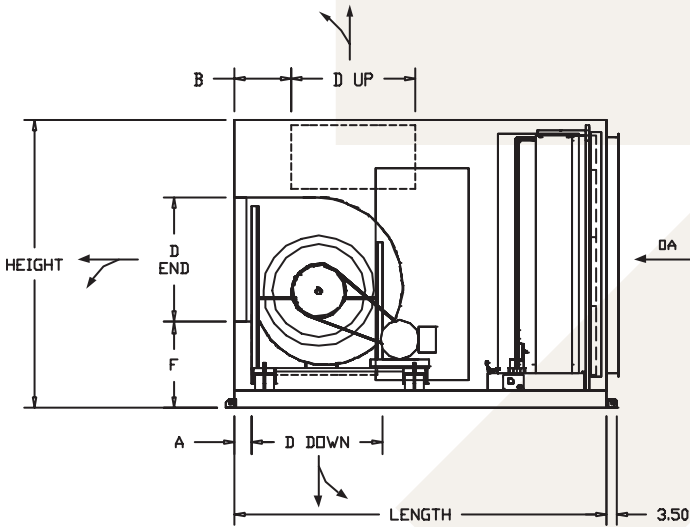
Unit height shown above does not include the standing roof seam. All these units are over 72" wide and therefore have a 3" high standing roof seam.

We recommend a minimum incoming water line pressure of 50 psi. Under no circumstances should the incoming water line pressure exceed 125psi.

Due to continued product development, all data is subject to change without notice. Full details will be provided with submittals.



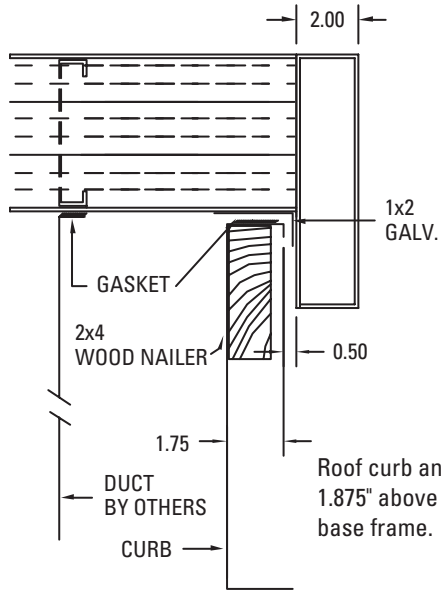
OUTSIDE CURB DIMENSIONS
 Deduct 5.0" from the O.D. of the baseframe to obtain the O.D. of the roof curb. Please check submittal drawings to verify exact O.D. of the baseframe before the roof curb is built.



COPPER PLUMBING LOCATION DETAIL



Roof Curb Detail

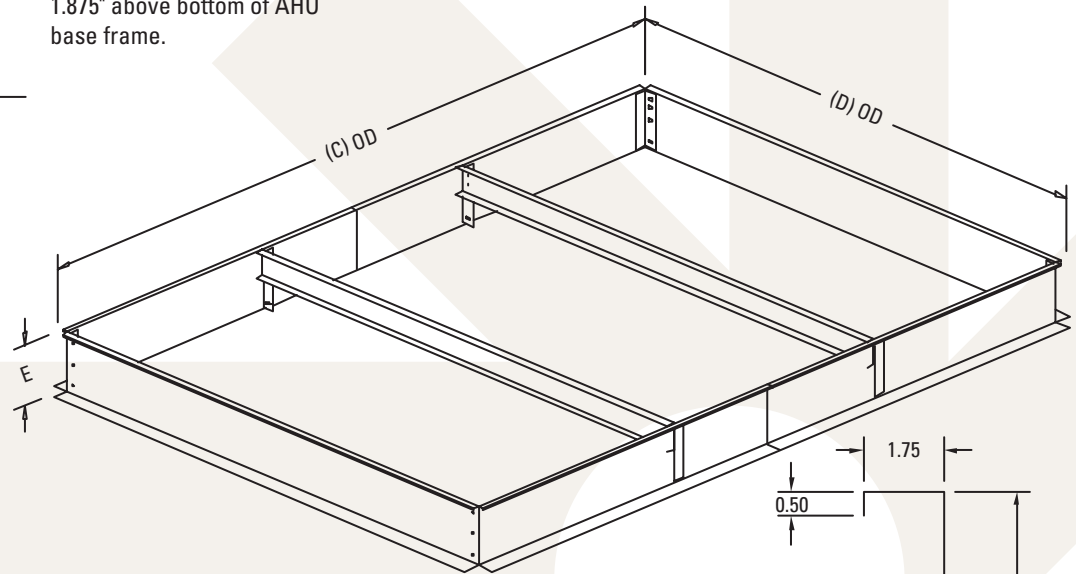


Roof curb and duct extend 1.875" above bottom of AHU base frame.

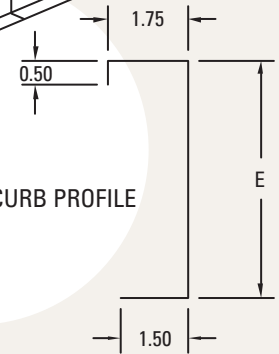
CURB DIMENSIONS

TAG	C"	D"	E	GAUGE

$CURB\ OD\ (C\ \&\ D) = UNIT\ OD - 5.00"$



CURB PROFILE



14GA G-90 Galvanized steel is standard. 12GA G-90 available when specified.

Knock down curbs are optional built up curbs are standard and shipped from the factory fully assembled.

Contact factory for pitched curb requirements.



Standard Features

- 16ga pre-painted steel single skin casing
- All fans can be ordered for up, down, or horizontal discharge
- Powder coated fan housing
- Heavy duty L-50 200,000 hour bearings
- Fan belts & pulleys—fully installed, aligned and tensioned
- 460v/3ph/60Hz ODP standard efficiency motors
- Adjustable motor slide base
- 1" deflection spring anti-vibration mounts with seismic restraints
- Flexible connector at fan discharges
- Double-wall hinged access doors for fan and evaporative media access
- Fully welded and painted G-90 galvanized sump and media support
- 12" thick CELdek® evaporative cooling media (not available with ETL label)
- Heavy duty evaporative cooler pumps with adjustable water flow and bleed lines
- Copper water distribution pipework with end cleanouts
- Fully weatherproof
- 4" double drainable weather louver with bird screen
- Fan door mechanical safety locks
- Pre-wired motors and pumps to a single external junction box

Optional Features

- 16ga G-90 galvanized single skin casing with tough powder coated finish to casing—baked at 375°F
- 2" throwaway panel or 2" washable panel filters (side access)
- Filter pressure differential gauge or switch
- 12" thick 90% efficient GLASdek® UL900 Class 2 evaporative media for ETL labeled units per UL 1995 standard
- Premium efficiency ODP or TEFC motors
- Extended fan bearing lubrication lines
- Fan bearings upgraded to L-10 200,000 hours
- Fan belt guards
- Safety door screens
- 2" deflection spring anti-vibration mounts with seismic restraints
- Stainless steel evaporative media holding rack
- Stainless steel sump
- Stainless steel pumps
- Aluminum cabinet (for reduced operating weight)
- Stainless steel cabinet
- 2" double wall construction
- Smooth or perforated inner liners
- 1" or 2", 1.5# or 3# insulation on internal walls
- Single point power connection
- Electrical transformers & magnetic motor starters
- Internal lights with weatherproof switch
- GFI receptacle
- Fan door safety disconnect switches
- Automatic flush kit with timer
- Automatic drain-down with timer
- Automatic drain-down & freeze protection with timer
- Roof curb—flat or pitched, insulated or uninsulated

Typical Applications

- Aircraft hangers
- Clean room M.U.A.
- Food processing plants
- Gymnasiums
- Hospitals
- Kitchens
- Make up air requirements
- Manufacturing facilities
- Military bases
- Mining industry
- Municipalities
- Prisons
- Process cooling
- Schools
- Textile industries
- Turbine inlet cooling
- Waste water treatment facility
- Warehouses