

Side-Wall Power Ventilators & Fresh Air Intakes For Commercial, Industrial and Agricultural Requirements

Features:

- Factory tested and shipped ready to operate, including factory wired components
- ETL listed and labeled in accordance with U.L. standards
- Copper-wound heavy duty ball bearing motors
- Self-aligning, heavy duty, greaseable, pillow block, ball type fan bearing
- Galvanized Steel Construction
- Adjustable motor sheave for air flow adjustment
- The most up-to-date propeller type axial fan affords maximum air delivery while minimizing horsepower
- Interchangeable components with UMP-700 Series evaporative coolers

• SE Series

- *Exhaust / Intake*
 - SE 30
 - SE 36
 - SE 42
 - SE 48

Available Options

- Pre-wired control packages
- Spark resistant fans
- Explosion proof motors
- Self-tensioning belt
- Installation accessories
- Back draft damper
- Safety guards
- Fused and non-fused disconnects

Resources Available for This Product

- Catalog By Mail
- Catalog Online



United Metal Products

1920 E Broadway Road Tempe, AZ 85282

T 480.968.9550

F 480.968.9555

www.unitedmetal.com

Model	AIR DELIVERY IN CUBIC FEET PER MINUTE								ELECTRICAL SPECIFICATIONS				FAN UNIT						Dimensions (inches)					Weights (Lbs) ②
	Inches Static Pressure (W.G.)								Fan Motor ①				Fan						Wall Opening					
	Free Air		0.125		0.25		0.375		HP	Max BHP	Volt/Phase 115/208/230 1-Phase Amps	Volt/Phase 208/230/460 3-Phase Amps	Dia.	Max RPM	Motor Pulley OD	Fan Pulley OD	Belt	Shaft	A	B	C	Wall Opening		
	CFM	RPM	CFM	RPM	CFM	RPM	CFM	RPM														A	B	
SE 30 Exhaust (E) Intake (I)	9,330	676	8,080	676	3,570	676	--	--	1/2	.57	9.8/5.4/4.9	2.4/2.2/1.1	30"	800	3.15	7.95	A40	1"	34.25	34.25	44.25	34.75	34.75	187
	10,650	771	9,610	771	7,710	771	5,150	771	3/4	.86	13.8/7.6/6.9	3.5/3.2/1.6	30"	800	3.75	7.95	A40	1"	34.25	34.25	44.25	34.75	34.75	195
	11,720	849	10,800	849	9,490	849	6,960	849	1	1.15	16.0/8.8/8.0	4.6/4.2/2.1	30"	800	3.75	6.95	A40	1"	34.25	34.25	44.25	34.75	34.75	197
SE 36 Exhaust (E) Intake (I)	12,550	550	10,870	550	7,360	550	--	--	3/4	0.86	13.8/7.6/6.9	3.5/3.2/1.6	36"	800	3.75	11.25	A44	1"	40.25	40.25	44.25	40.75	40.75	224
	13,830	610	12,330	610	9,980	610	--	--	1	1.15	16.0/8.8/8.0	4.6/4.2/2.1	36"	800	4.15	11.25	A44	1"	40.25	40.25	44.25	40.75	40.75	230
	15,610	680	14,300	680	12,770	680	9,350	680	1 1/2	1.73	20.0/11.0/10.0	6.6/6.0/3.0	36"	800	4.75	11.25	A44	1"	40.25	40.25	44.25	40.75	40.75	237
SE 42 Exhaust (E) Intake (I)	16,890	470	14,610	470	9,840	470	--	--	1	1.15	16.0/8.8/8.0	4.6/4.2/2.1	42"	690	3.15	11.25	A48	1"	46.25	46.25	44.25	46.75	46.75	269
	19,070	530	17,100	530	14,260	530	--	--	1 1/2	1.73	20.0/11.0/10.0	6.6/6.0/3.0	42"	690	3.75	11.25	A48	1"	46.25	46.25	44.25	46.75	46.75	275
	20,970	580	19,190	580	17,100	580	12,460	580	2	2.3	24.0/13.2/12.0	7.5/6.8/3.4	42"	690	4.15	11.25	A48	1"	46.25	46.25	44.25	46.75	46.75	298
SE 48 Exhaust (E) Intake (I)	22,710	430	19,850	430	13,880	430	--	--	1 1/2	1.73	20.0/11.0/10.0	6.6/6.0/3.0	48"	630	3.75	14.25	A60	1"	54.25	54.25	44.25	54.75	54.75	348
	25,050	470	22,500	470	18,940	470	--	--	2	2.3	24.0/13.2/12.0	7.5/6.8/3.4	48"	630	4.15	14.25	A60	1"	54.25	54.25	44.25	54.75	54.75	355
	28,620	540	26,410	540	23,930	540	18,630	540	3	3.45	--/18.7/17.0	10.6/9.6/4.8	48"	630	4.75	14.25	A60	1"	54.25	54.25	44.25	54.75	54.75	367

* Performance ratings shown does not include drive losses or system effect. Consider a minimum of 0.125" pressure on all systems.

* Performance shown is for installation Type A: Free Inlet, Free Outlet.

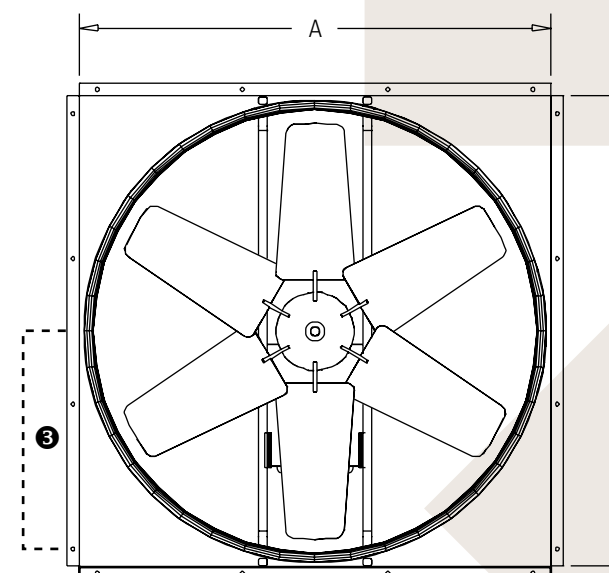
* Power rating (BHP) does not include drive losses.

- ① Only motors 1hp or less are provided with integral thermal protection. Motors 1.5 hp or greater require a separate motor overload device. Amperage ratings shown are NEC at nominal HP. Usable at 208v. Consult factory for overload and control options.
- ② Weights are in pounds and include motors, belts, and drives. Weights exclude optional accessories such as curb, damper and controls.
- ③ Electrical accessory if applicable. See job specific submittals data for details.

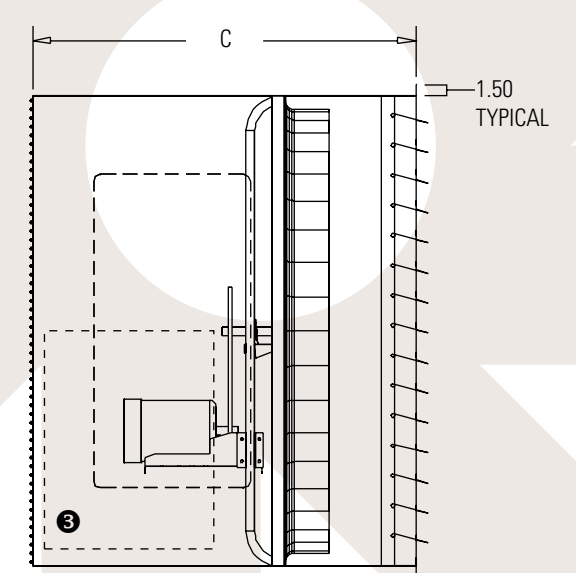
CAUTION: Do not use in hazardous environments where the fan's electrical system could provide ignition to combustible or flammable materials, unless unit is specifically built for hazardous environments.

WARNING: Guards must be installed when fan is within reach of personnel or within seven (7) feet of working level or when deemed advisable for safety.

End View



Side View

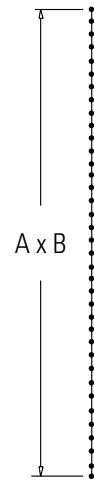


SE Optional Accessories

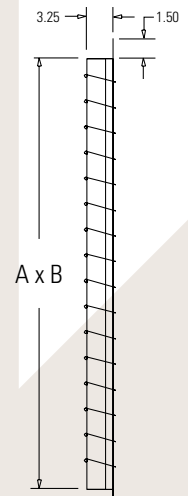
Description	Part #	A	B	C	Weight in Lbs.
SE30 Outlet Safety Grill	81563	33.00	33.00	--	21
SE36 Outlet Safety Grill	81564	39.00	39.00	--	25
SE42 Outlet Safety Grill	81565	45.00	45.00	--	30
SE48 Outlet Safety Grill	81566	53.00	53.00	--	39
SE30 Side Outlet Damper	11971	33.75	33.75	--	23
SE36 Side Outlet Damper	11972	39.75	39.75	--	27
SE42 Side Outlet Damper	11973	45.75	45.75	--	29
SE48 Side Outlet Damper	11974	53.75	53.75	--	37
SE30 Side Inlet Damper	81633	30.50	30.50	--	19
SE36 Side Inlet Damper	81634	36.50	36.50	--	23
SE42 Side Inlet Damper	81635	42.50	42.50	--	25
SE48 Side Inlet Damper	81636	50.50	50.50	--	33
SE-30 Rain Hood w/Grill Assy	84952	34.00	34.25	29.75	73
SE-36 Rain Hood w/Grill Assy	84951	40.00	40.25	33.75	93
SE-42 Rain Hood w/Grill Assy	84950	46.00	46.25	37.75	116
SE-48 Rain Hood w/Grill Assy	84949	54.00	54.25	43.15	151
SE-Industrial Knee Brace Kit	80256	--	--	--	7

Many configurations of components are available. For simplicity we have listed the most common uses. Always consult the factory if project requires applications other than listed here.

SAFETY GRILL



OUTLET DAMPER



RAIN HOOD WITH GRILL

